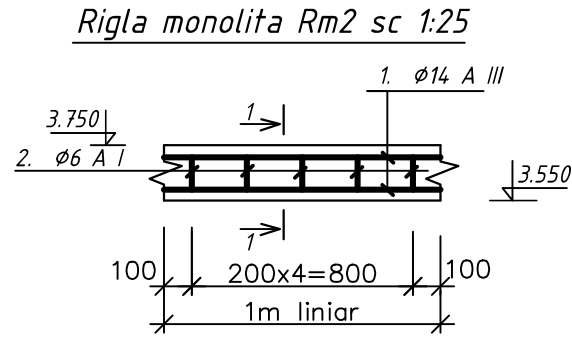
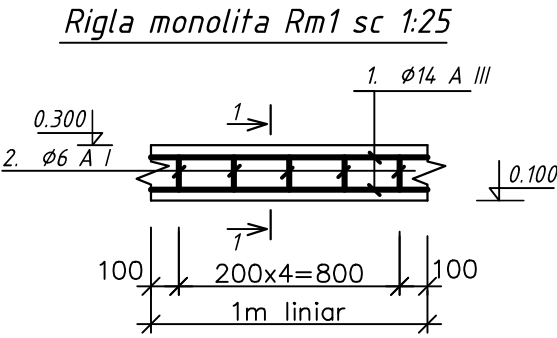
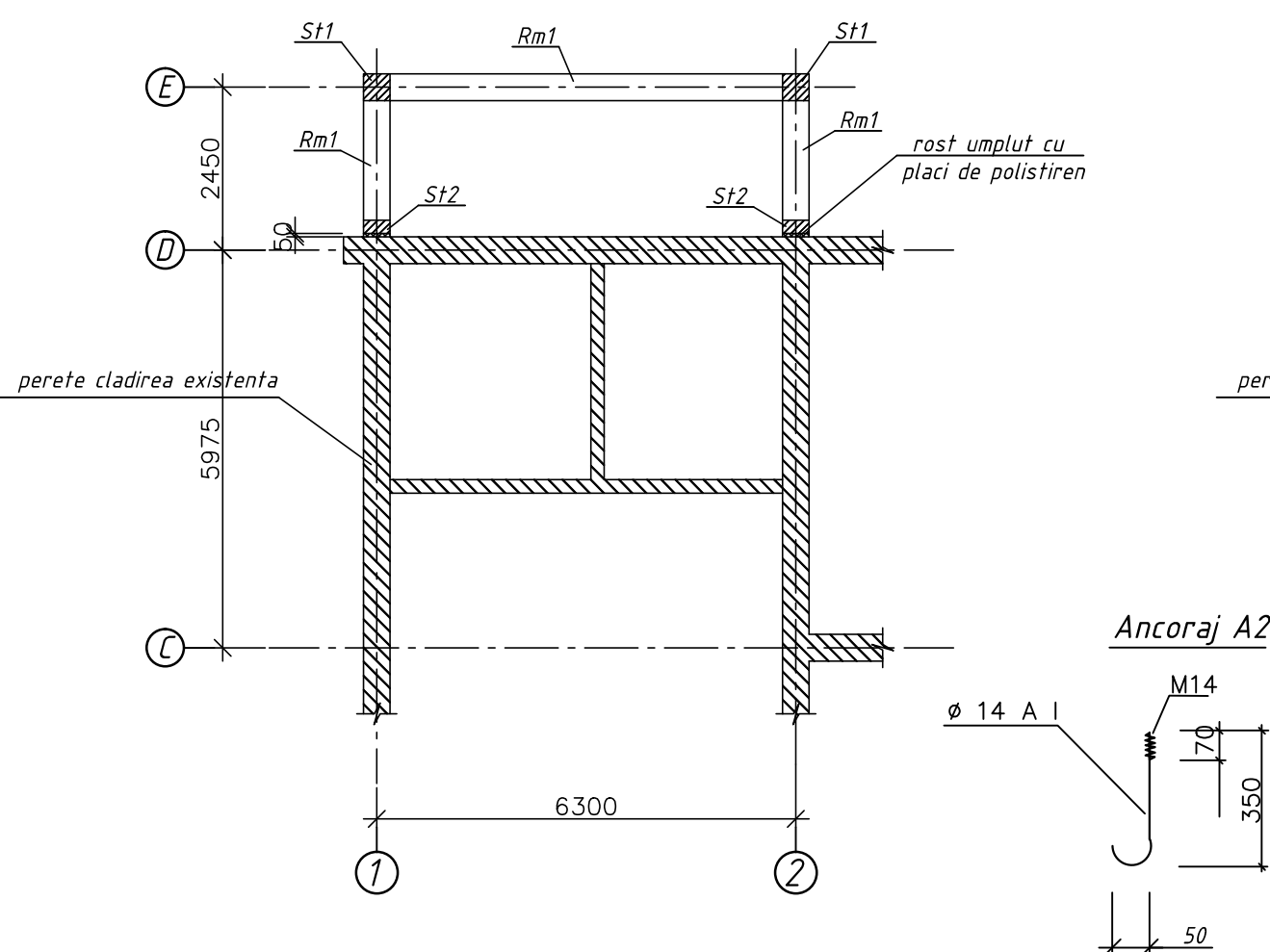
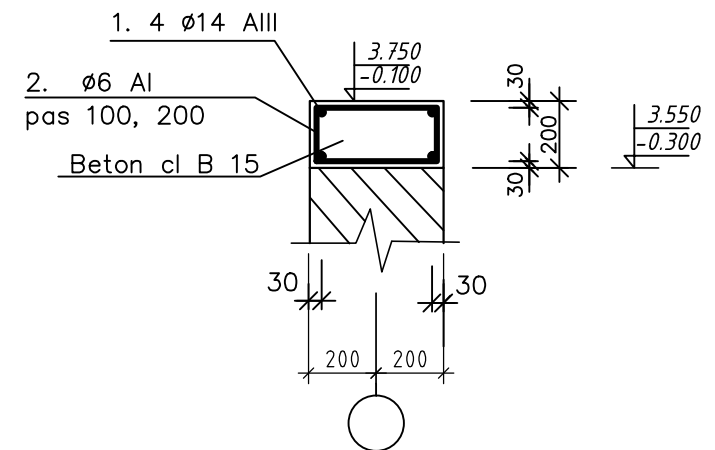
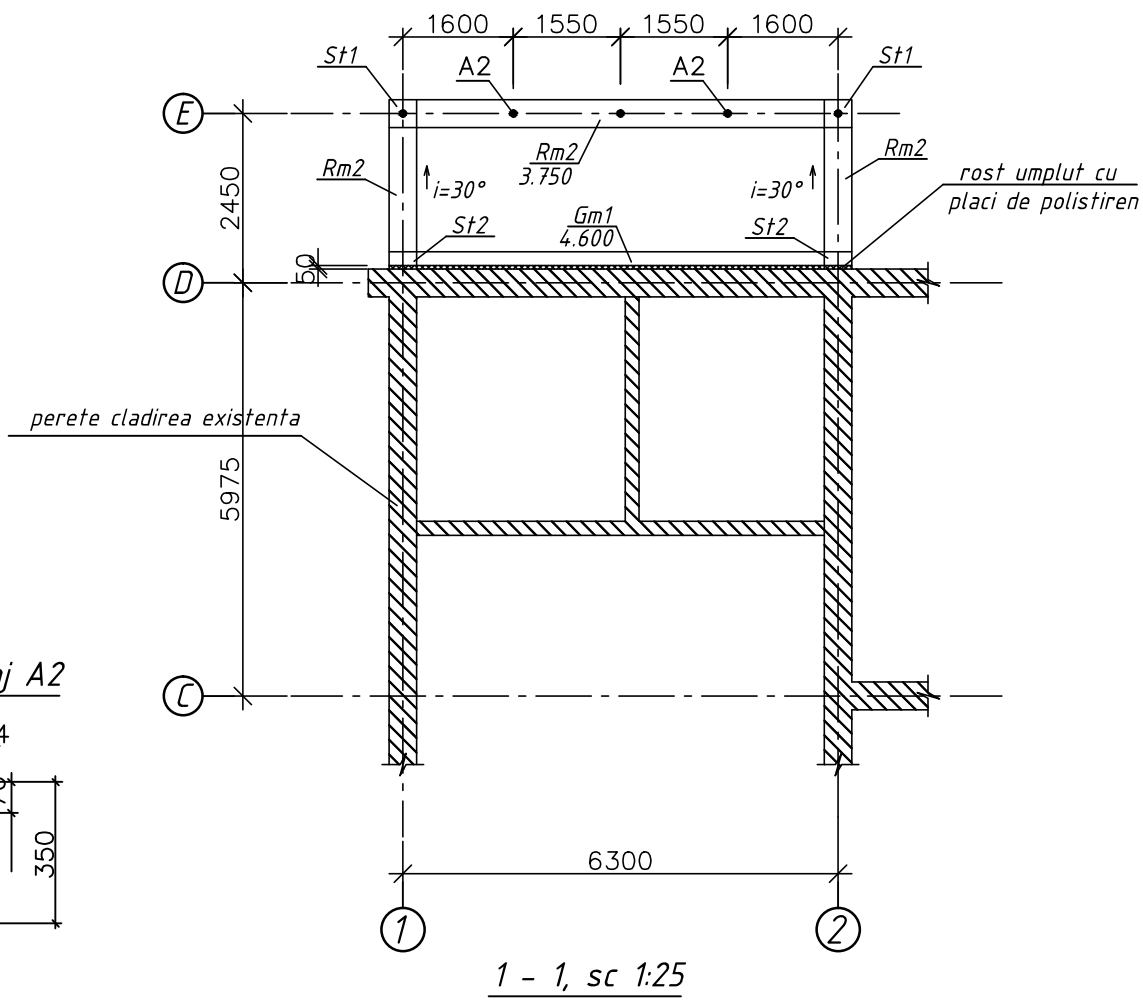


Schema amplasarii elementelor din beton armat la cota 0.300, sc 1:100



Schema amplasarii elementelor din beton armat la cota 3.750 - 4.600, sc 1:100



				Obiect Nr: 18-2020-SAC			
				Acoperis sarpant si anexa neincalzita la sediul primariei s. Borogani, r. Leova			
				Beneficiar: primaria s. Borogani			
				Acoperis sarpant si anexa neincalzita	FAZA	PLANSA	PLANSE
ISP			12.20		PE	14	
Executat			12.20	Schema amplasarii elementelor din beton armat la cota 0.300 si 3.750-4.600			